



Savoy Wood, Harlow, CM19

BUTLER  STAG



**Guide Price £275.000 -
£300.000**

**Wonderfully positioned
just on the outskirts of
Epping is this delightful
two bedroom mid
terraced home.**



Freehold

- Sold by Butler and Stag
- Spacious Lounge
- Separate Dining Room
- Two Bedrooms
- Outside Storage
- Mid Terraced Family Home

Accommodation comprises of a large lounge, a fitted kitchen with a separate dining area. The first floor hosts two bedrooms and a modern family bathroom.

Externally the property offers a 25' rear garden and plenty of space for parking.

The property is set within easy access to M11, Epping Train Station & Harlow Mill Train Station, both of which offer direct links to London Liverpool Street.





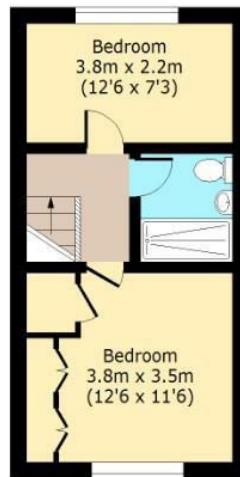
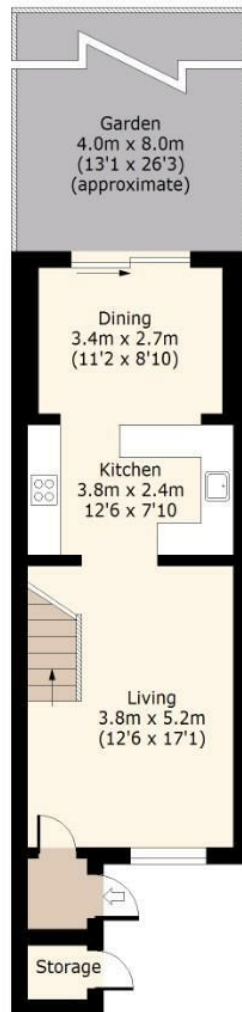
Savoy Wood,

Ground Floor

Approx. 42.55 Sq. meters (458 Sq. feet)

First Floor

Approx. 30.75 Sq. meters (331 Sq. feet)



Total area: approx. 73.30 Sq. meters (789 Sq. feet)
For illustration purposes only - not to scale
www.lpaplus.com



BUTLER & STAG

01992 667666

4 Forest Drive, Theydon Bois, Essex, CM16 7EY

theydon@butlerandstag.com

www.butlerandstag.uk

IMPORTANT NOTICE - These particulars have been prepared in good faith and they are not intended to constitute part of and offer or contract. We have not performed a structural survey on this property and the services, appliances an specific fittings have not been tested. All photographs, measurements, floor plans and distances referred to are given as a guide and should not be relied upon.